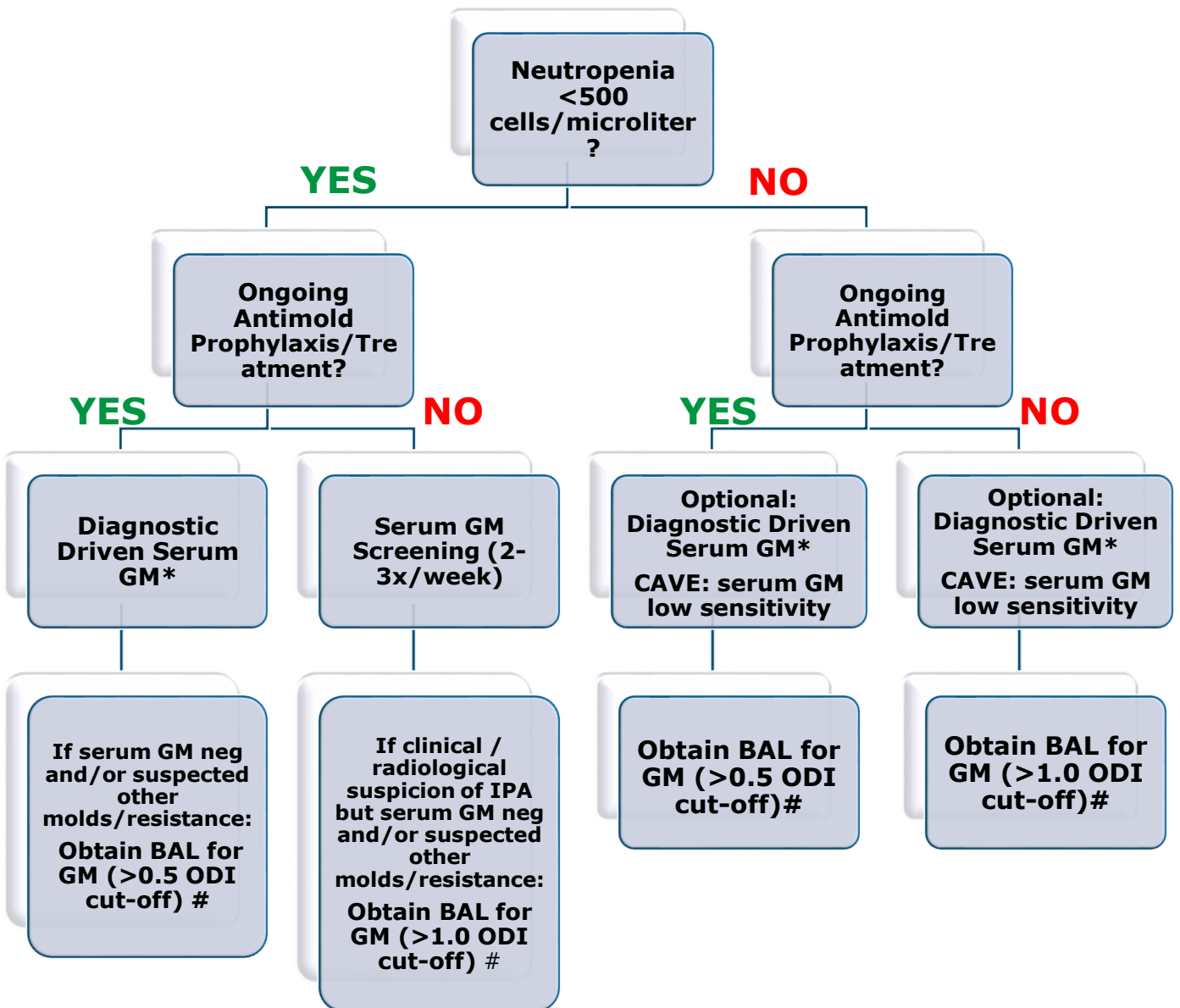


# GALACTOMANNAN (GM) TESTING FROM SERUM AND BRONCHOALVEOLAR LAVAGE (BAL) FOR INVASIVE PULMONARY ASPERGILLOSIS (IPA) IN HIGH RISK PATIENTS§

DOI: 10.4126/FRL01-006407044



\* i.e. repeated GM Testing to obtain mycological evidence in case of Clinical/ Radiological suspicion of invasive Aspergillosis (consider sputum cultures)

# plus perform culture/PCR to detect also other molds/resistance

§ i.e. populations with IA prevalence >5% in the absence of antimould prophylaxis

**References:** Duarte R et al. Bone Marrow Transplantation, 2017;52,326-329.; Vena A et al. Clin Microbiol Infect. 2017; Duarte R et al. CID 2014;59(12):1696-702; Petraitiene R et al. Med Mycol, 2015;53(6):558-568; Eigl S et al. IJAA 2015;46(4):401-405; Eigl S et al Med Mycol, 2017;55(5):528-534; Cordonnier C et al. CMI, 2008;15(1):81-6; Maertens J et al. CID, 2009;49:1688-93; Prattes J et al. Mycoses, 2015;58(8):461-9; Pfeiffer SD et al. CID. 2006;15;42(10):1417-27